



Serving Things Rightly...



CONTINUOUS
INKJET PRINTER

RE 2000

CONTINUOUS INKJET PRINTER

RE 2000

Independent research Flexible application
Industrial-grade main board Stable and reliable
Double stirring system Anti precipitation
Smooth gemstone nozzle Better inkjet effect
Gear pump Stable pressure

Print Head Duct

3MTR

Nozzle Specification

70um

Printing Height

2mm to 20mm

Print Distance

3mm to 30mm

Machine Material

Stainless Steel 304

Display Screen

10.1 inch colour display,
Industrial touch screen

Machine Dimension

337X316X561(L*B*H*)

Working Environment

Temperature 40 - 105° F (10 - 40°C)
Humidity 10% - 90%, Non Condensing

Operating System

Embedded Linux security operating system

Motherboard Memory

256M

Machine Dimension

337X316X561(L*B*H*)

Printing Lines

1 to 4 Lines

Printing Speed

528 m/min

Counter

Up to 24 Counters

Protection Level

Ip65

INK Colour

Black, Red, Blue, Green, Sky Blue, Brown,

Related Certificate

CE, EAC, BIS

INK Type

High adhesion, high temperature resistance,
Special for glass, permeability, food grade,
Oil resistance

Electric Requirement

220 - 240 ACV, 5A, 50/60Hz, 1PH



Printing Material

Carton, Plastic, Metal, Boarding, Pipe, Cable
Stone, Glass, Electronic components, Food,
Auto parts, Industrial chemical packaging

Communication Interface

RS232, Network interface, connection to enterprise
EMS Management system
(Various external equipment protocols can be added)

Print Content

Text, Time, Date, Logo, Shift, SN, Dynamic QR Code,
Dynamic Serial Data, Dynamic Database

PRINT HEAD

Aluminum alloy material Flip design for easy
daily maintenance.



INK SYSTEM

Ink System design of the black ink machine.
the printing is stable and durable. High stability of
the recovery pump, not easy to block the pump,
durable and long-lasting.

Print Sample



Support Language

Support more than 40 national languages
Chinese, English, Arabic, Danish, German,
Russian, French, Finnish, Korean, Norwegian,
Portuguese, Japanese, Spanish, Italian, etc.

External Interface

Optical Sensor, Encoder, Signal Light Alarm Output,
Information Selection and Control, Reset Switch.

Main Hardware

U.S. TI AM3358 industrial-grade CPU,
U.S. Xilinx Spant6 industrial-grade FPGA,
ASIC chip



PRINTER CHASSIS

Robust and durable stainless steel.





CONTINUOUS
INKJET PRINTER



RE 200 Plus

CONTINUOUS INKJET PRINTER

RE 200 Plus

Easy operation with 10.1" large screen.

One-key start and stop precise control.

Independent module maintenance is simple.

Automatic cleaning to prevent clogging.

Classic ink circuit is stable and reliable.

Print head Umbilical

3MTR

Printing Lines

1 to 5 Lines

Nozzle Specification

60um

Printing Speed

450 m/min

Printing Height

2mm to 14mm

Counter

More than 20 Independent Counter

Throw Distance

1mm to 15mm

Ink Colour

Black, Red, Brown, Royal Blue,
Sky Blue, Green.

Operating System

Embedded Linux security operating System

Display Screen

10.1-inch colour display (Industrial Touchscreen)

Communication Interface

Network port, USB, Rs232

Protection Level

Ip55

Font Matrix Configuration

5x6L, 7x6L, 7x10L, 9x8L, 9x11L, 11x11L, 16x16L,
24x24L, 32x32L, 11x11B, 16x16B, 24x24B, 32x32B

Machine Dimension

447mmx242mmx650mm (L X W X H)

Machine Material

stainless steel (304)

Electric Requirement

220 - 240 ACV, 5A, 50/60Hz, 1PH

Working Environment

Temperature 40 - 105° F (10 - 40°C)

Humidity 10% - 90% , Non Condensing

Related Certification

RoHS, CE, BIS

Net Weight

30Kg



Printing Material

Carton, Plastic, Metal, Boarding, Pipe, Cable
Stone, Glass, Electronic components, Food,
Auto parts, Industrial chemical packaging,

External Interface

Optical sensor, Encoder, Reverse and upside
down control, Signal light alarm output,
Serial number output control,
External printing information selection

Print Content

Text, Time, Date (Julian Year), Logo, Shift, SN, Dynamic Barcode,
QR Code, Dynamic Serial Data, Dynamic Database

PRINT HEAD

The nozzle valve adopts direct sealing nozzle
hole structure, effectively prevent the ink leakage.



MAIN HARDWARE

The main board with newest structure has superior
performance of function and stability, and the EHT is
dustproof and waterproof, better to deal with the harsh
and complex environment.

Print Sample



Support Language

English, Arabic, Chinese, Danish, German,
Russian, French, Finnish, Korean, Japanese,
Spanish, Italian, etc. (Support more than 40
national languages)

Main Hardware

American TIAM3358 industrial grade CPU
American Xilinx Spartan-6 industrial grade FPGA



INK SYSTEM

Double-head pump design makes more stable and durable.

White ink machine has double mixing system to prevent
the pigment ink precipitation.





CONTINUOUS
INKJET PRINTER

RE 2000 P

CONTINUOUS INKJET PRINTER

RE 2000 P

Independent research Flexible application
Industrial-grade main board Stable and reliable
Double stirring system Anti precipitation
Smooth gemstone nozzle Better inkjet effect
Gear pump Stable pressure

Print Head Duct

3MTR

Nozzle Specification

70um

Printing Height

2mm to 20mm

Print Distance

3mm to 30mm

Machine Material

Stainless Steel 304

Display Screen

10.1 inch colour display,
Industrial touch screen

Machine Dimension

337X316X561(L*B*H*)

Working Environment

Temperature 40 - 105° F (10 - 40°C)
Humidity 10% - 90%, Non Condensing

Operating System

Embedded Linux security operating system

Motherboard Memory

256M

Machine Dimension

337X316X561(L*B*H*)

Printing Lines

1 to 4 Lines

Printing Speed

528 m/min

Counter

Up to 24 Counters

Protection Level

Ip65

INK Colour

White, Yellow

Related Certificate

CE, EAC, BIS

INK Type

Pigment Base

Electric Requirement

220 - 240 ACV, 5A, 50/60Hz, 1PH



Printing Material

Carton, Plastic, Metal, Boarding, Pipe, Cable
Stone, Glass, Electronic components, Food,
Auto parts, Industrial chemical packaging

Communication Interface

RS232, Network interface, connection to enterprise
EMS Management system
(Various external equipment protocols can be added)

Print Content

Text, Time, Date, Logo, Shift, SN, Dynamic QR Code,
Dynamic Serial Data, Dynamic Database

PRINT HEAD

Aluminum alloy material Flip design for easy
daily maintenance.



INK SYSTEM

The ink system with double stirring mode to
prevent the pigment precipitation



Print Sample

Support Language

Support more than 40 national languages
Chinese, English, Arabic, Danish, German,
Russian, French, Finnish, Korean, Norwegian,
Portuguese, Japanese, Spanish, Italian, etc.

External Interface

Optical Sensor, Encoder, Signal Light Alarm
Output, Information Selection and Control,
Reset Switch.



PRINTER CHASSIS

Robust and durable stainless steel.





CONTINUOUS INKJET PRINTER



RE 225

CONTINUOUS INKJET PRINTER

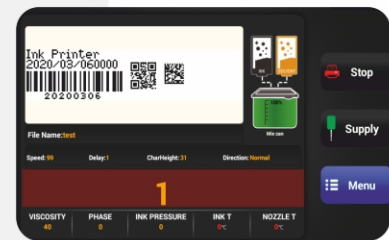
RE 225

10.1 Inch Full Touch Screen, Human Kindly Interface
Icon Menu, Easy To Understand And Operate
8g Storage, Can Store A Lot Of Files
Variable Bar Code Online Printing
Recognition Rate Of Bar Code Can Reach 99.9%
The Smallest Barcode Can Be 2*2mm
The Smallest Letter Can Be 0.8mm, But Still Nice Quality
Strong System Compatibility, Can Update Continuously
Pair 8 Core Processor, Improve Information Processing Capacity
Support External Data Transportation And Printing, Suit To Intelligence Production Line
Automatic Print Head Cleaning And Washing, No Ink Deposit
Modularized Ink System Design, Easier Maintenance
No Need To Turn Off Printer When Change Inks, Make Sure The Running Time Maximum.



Printing parameters

Product Model	RE-225
Max printing dots	32 dots
Printing lines	1-5 lines
Printing height	1.2-15mm
Max printing speed	400m/min
(single line 5x5, character width 2mm)	
Nozzle size	



Printing information type :

Text	: Support all UNICODE content
Graphics	: USB import. ("BMP" self-edited graphics)
ID barcode	: Code39, Code93, Code128, EAN13, ITF, Barcode, UPC_A&C
OR Code	: OR CODE (Size : 21X21, 25X25, 29X29, 33X33, 37X37)
Data Matrix Size	: 10X10, 12X12, 14X14, 16X16, 8X18, 18X18, 20X20, 22X22, 24X24, 26X26, 8X32, 32X32, 12X36, 16X36
Font matrix configuration :	3x5, 5x5, 4x6, 5x7, 7X9, 7X13, 8x13, 9x15, 9x18, 10x20, 12X12, 12x24, 16x16, 24x24, 32x32)



Print function :

Single line printing 1000 characters

Automatic date update, can print hours, minutes, seconds, date, week, month, year

Invert images, barcode and text (such as white on black)

Create and edit messages during coding

5 sets of serial numbers can be printed at the same time

User interface :

10.1 inch high sensitive TFT touch screen

Operating system: CS Printer System i custom developed based on Android

Operation interface: ACC UI 2.0

Nozzle characteristics :

Yc-icst intelligent constant temperature system

Fully automatic ink drop decomposition, charging and controlling ink line

Catheter length 2.5m (optional 5m)

Minimum bending radius of conduit is 85 mm

Ink / Solvent :

Capacity: 750ml / 750ml

Ink colour: black, blue, red, green, brown

Features :

Temperature range: 5 °C - 45 °C (41 F - 113 F)

Humidity range: 10% -90% RH without condensation

Power requirement: AC100-240V,50/60Hz,150W

Body material: carbon steel, black spraying

Protection level: IP55

Dimension: 452*261*450mm

Hardware features :

Net weight: kg (without consumables)

Ink circulation maintenance system (filter system), maintenance interval

Intelligence temperature maintain system on printhead, suit to the environment automatically

The ink cartridge and solvent cartridge are designed to prevent incorrect installation, and the capacity can be 750ml

Support static and dynamic application of nozzle

Coding software system :

One key to start/stop coding

Automatically save data when power off

Switch languages without rebooting

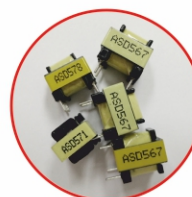
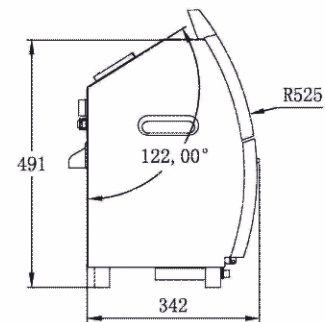
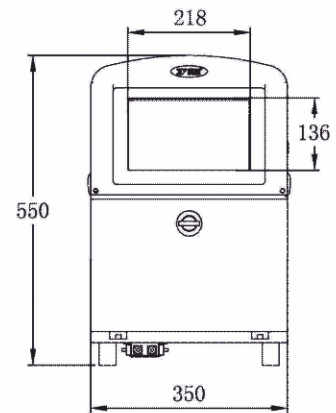
Parameter backup and restore function

Database files, fonts, pictures, language files, and print files can all be imported or exported through a USB storage device.

Enhanced Mode Cleaning Nozzles

One-click automatic cleaning of the entire ink circuit (long-time shutdown)

Automatically adjusts ink droplets to ensure the best typing quality





CONTINUOUS
INKJET PRINTER

RE 224

CONTINUOUS INKJET PRINTER

RE 224

Technical Specifications

Product Model	:	RE-224
Max printing dots	:	24 dots
Printing lines	:	1-3 lines
Printing height	:	1.2-15mm
Max printing speed	:	260m/min

Font matrix configuration

ASCII: 3x5. 5x5. 4x6. 5x7.
79. 7x13. 8x13.
9x15. 9x18. 10x20. 12x12. 12x24.
16x16. 24x24
Chinese: 12x12. 16x16. 24x24

Featured file function

Configure 8 GB memory and store 10000+ files
Support multi-language custom file name, easy keyword search

language selection

Interface language: Simplified Chinese. Traditional Chinese. English. Japanese.
Korean. Hindi. Italian. Filipino. Turkish. Vietnamese. Spanish French

User interface

10.1 inch high sensitive TFT touch scree

Software system

Support remote online upgrade
Automatic diagnosis of machine status
Parameter backup restore function
Automatically record operation logs

Nozzle characteristics

Kotest tie term constant temperature system
Catheter length 2.5m (optional 5m)
Minimum bending radius of conduit is 85mm

Printing information type

Support all UNICODE content
Self-edited graphics
1D barcode: Code39;Code93;Code128;EAN13;ITF;Codebar;UPC_A&C Single line printing 666 characters
Round-trip printing
Automatic date update, can print hours, minutes, seconds, date, week, month, year
Invert images, barcode and text (such as white on black)
Create and edit messages during coding
Characters are widened by 14 times
5 sets of serial numbers can be printed at the same time

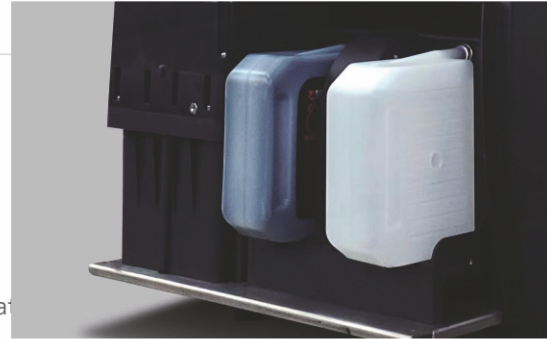


Features

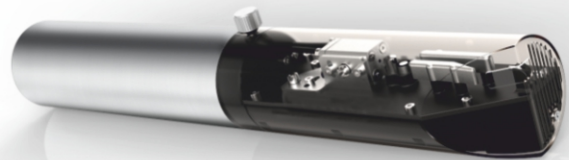
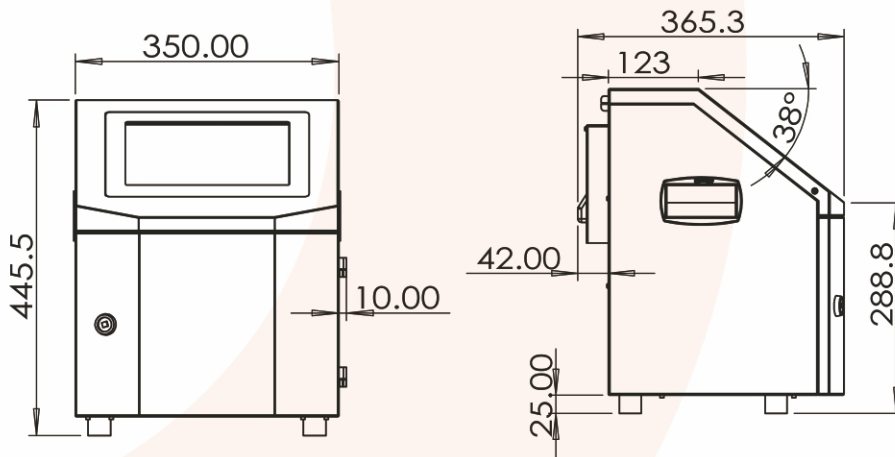
Temperature range: 5 °C - 45 °C (41 F - 113 F)
 Humidity range: 10% -90% RH without condensation
 Power requirement: AC100-240V,50/60Hz, 150W
 Body material: carbon steel, black spraying
 Protection level: IP55
 Dimension: 350°365+445mm
 Weight (without consumables): net weight without packaging is about 26.5kg,
 including the packagin weight of about 27kg.

PRODUCT FEATURES

Configure 8 GB memory and store 10000+ files
 Support multi-language custom file name, easy keyword search
 Unique design and stable operation
 Modular ink path design, simple maintenance
 The gear pump is durable and doesn't need regular replacement
 Automatic fault diagnosis function
 10.1-inch touch screen, multi-functional interface, smooth switching, easy to operate
 Excellent printing function
 The latest patented nozzle technology, Printing fonts clear and neat
 Line feed dynamic reverse and rotary jet code
 Time automatically updated: hour, minute, second, day, week, month, year



MACHINE DAIMENTION





DOD LARGE
CHARACTER
INKJET PRINTER

RE 1000

DOD LARGE CHARACTER INKJET PRINTER

RE 1000

Easy operation with 7" large screen

One-key start and stop precise control

Independent module maintenance is simple

Automatic cleaning to prevent clogging

Classic ink circuit is stable and reliable

Print Head Duct

3m/6m

Nozzle Specification

150um

Printing Height

7 Dot : 5mm to 28mm

16 Dot : 5mm to 64mm

32 Dot : 5mm to 128mm

Print Distance

3mm to 30mm

Machine Material

Stainless Steel 304

Display Screen

7 inch colour display,

Industrial touch screen

Machine Dimension

296X296X490(L*B*H*)

Working Environment

Temperature 40 - 105° F (10 - 40°C)

Humidity 10% - 90%, Non Condensing

Operating System

Embedded Linux security operating system

Motherboard Memory

256M

Rated Power

150W

Printing Lines

1 to 4 Lines

Printing Speed

63m/min

Counter

Up to 20 Counters

Protection Level

Ip65

INK Colour

Black, White, Blue, Green, Yellow, Invisible

Related Certificate

CE, EAC, BIS

INK Type

MEK based, Water based, Alcohol based, Acetynyl, Pigment

Electric Requirement

220 - 240 ACV, 5A, 50/60Hz, 1PH



Communication Interface

RS232, Network interface, connection to enterprise EMS Management system
(Various external equipment protocols can be added)

Print Content

Text, Time, Date, Logo, Shift, SN,
Dynamic QR Code, Dynamic Serial Data,
Dynamic Database

Printing Material

Carton, Plastic, Metal, Boarding, Pipe, Cable, Stone,
Glass, Electronic components, Food, Auto parts,
Industrial chemical packaging, Paint Surface &
other permeable & non-permeable surface

Font

5X6L, 7X6L, 7X10L, 9X8L, 9X11L,
11X11L, 12X12L, 16X16L, 24X24L, 32X32L,
11X11B, 12X13B, 16X16B, 24X24B, 32X32B

External Interface

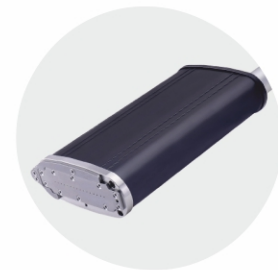
Optical Sensor, Encoder, Signal Light Alarm
Output, Information Selection and Control,
Reset Switch.

Support Language

Support more than 40 national languages
Chinese, English, Arabic, Danish, German,
Russian, French, Finnish, Korean, Norwegian,
Portuguese, Japanese, Spanish, Italian, etc.

PRINT HEAD

The nozzle uses wear-resistant and durable gem material, which makes the dot of the jet more round and can be used for a long time. The print head can be rotated to achieve to print different characters and different fonts.



INK System

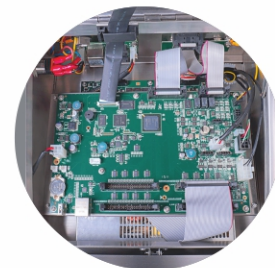
The design of stable and durable internal pump can make the printer work without air source. White ink machine has automatic stirring system to prevent the pigment ink precipitation.

in Hardware

Print Sample



h integration of the industrial level of the new
motherboard works fast and stable, which can
better to deal with the extremely harsh
environment





LASER
MARKING
MACHINE

Co2 Flying
Laser

LASER MARKING MACHINE

Co2 Flying Laser

Petmark 9330

Laser Power: 30W
Marking Speed: 7000 mm/s
Marking Area: 100mm X 100mm
Speed of Machine: 150 to 450 m/min
(Depend on Application)

Petmark 9360

Laser Power: 60W
Marking Speed: 8000 mm/s
Marking Area: 200mm X 200mm
Speed of Machine: 250 to 700 m/min
(Depend on Application)

Laser Type

CO2

Electrical Requirement

100 – 230 ACV, 5A, 50/60Hz, 1PH

Wavelengths

9.3um, 10.6um

Gross Power

300W

Laser Source

Rejet, Synred, Coherent, Davi

Depth Of Engraving

0.3mm

Language Ability

English, Arabic, German, Chinese

Gross Weight

70kg., 154.3lbs

Environment

Temperature 40 – 105° F (10 – 40°C)
Humidity 10% – 90%, Noncondensing

Marking Formats

Graphics, Logo, Text, Barcode,
QR Code, TTF Font, Sequential and
Batch Numbering

Features:

This metal tube CO2 laser system offers superior Marking for even the most demanding production line.
High Efficiency and good beam Quality
Low Power requirement
Compact and low Maintenance
Support quick reaction and smooth operation

Applicable Product

PET and Other Plastics | Acrylic
Wood | Rubber | Clothes | Ceramic,
Leather | Bamboo | Cardboard





LASER
MARKING
MACHINE

Fiber Flying
Laser

LASER MARKING MACHINE

Fiber Flying Laser

Betabeam 6430 / 6450

Laser Type

Multi-mode FIBER Laser

Laser Power

30W, 50W

Electrical Requirement

100 - 230 ACV, 5A, 50/60Hz, 1PH

Load

< 1KW

Environment

Temperature 40 - 105° F (10 - 40°C)

Humidity 10% - 90%, Noncondensing

Wavelengths

1064 nm

Depth of Engraving

80 Micron

Guide Laser

In Built Red and Red Focal

Laser Source

Rejet, Raycus, JPT, IPG

Marking Area

100mm to 300mm

Speed of Machine

1m/min to 100 m/min

(Depend on Application &
Character Size)

Marking Formats

Logo, Text, Barcode, TTF Font,
Automatic Date & Time Real time Clock,
Sequential Batch Numbering

Language Ability

English, Arabic

Marking Speed

0 ~ 8000 mm/s

Feature

Laser Communication and Control interface card or time delay high speed, High efficiency
24/7 Hours Continuous working ability.

Support automatic coding, variable text, Serial number, batch number, Date, Etc.

High-Precision Marking up to 80microns deep.

Linux Software Ensure a stable and secure system.

Support RS232.TCP/IP Communication Photoelectric Sensor, Encoder and other.

Applicable Material

Cable | Electroplating Surface

PP | Different Metal | ABS

PVC Pipe | HDPE | Aluminium Teen





LASER
MARKING
MACHINE

Fiber Desktop
Laser



Fiber Desktop Laser

Pluto

Laser Type

Desktop FIBER Laser

Laser Power

30W, 50W

Electrical Requirement

100 - 230 ACV, 5A, 50/60Hz, 1PH

Environment

Temperature 40 - 105° F (10 - 40°C)
Humidity 10% - 90%, Noncondensing

Laser Source

Rejet, Raycus, JPT, IPG

Guide Laser

In Built Red and Red Focal

Control Software

EZ Cad Marking Software

Marking Area

110, 220, 300 (mmXmm)

Wavelengths

1064 nm

Language Ability

English, Arabic

Marking Depth

80 Micron

Cooling Method

Customized

Marking Speed

0 ~ 8000 mm/s

Marking Format

Graphic, Logo, Text, Barcode, QR Code,
TTF Font, Sequential and Batch
Numbering, Automatic Date & Time,
Variable Text, Real time Clock

Applicable Material

Mechanical Parts

Hardware Tool

Plastic Surface

Medical Instrument

Precision Equipment

Bath Ware and Kitchen Accessories

Auto Spare Part

Electronics Components

Feature:

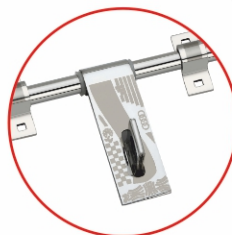
Small, Impact Structure, Portable, Light Weight

User Friendly Software

File Compatibility Allow to mark TTF, BMP, JPEG, DXF, PLT, PS.

Serial number Marking, Logo, Image, Bar Code, QR Code.

Optional Rotary Marking.



www.rejettech.com



LASER
MARKING
MACHINE

UV Laser

LASER MARKING MACHINE

UV Laser

UV 3553 / 3555

Laser Type

UV Modal

Laser Power

03W, 05W

Electrical Requirement

100 – 230 ACV, 5A, 50/60Hz, 1PH

Environment

Temperature 40 – 105° F (10 – 40°C)

Humidity 10% – 90%, Noncondensing

Laser Source

JPT

Guide Laser

In Built

Control Software

EZ Cad Marking Software

Marking Area

110, 220 (mmXmm)

Wavelengths

355 nm

Language Ability

English, Arabic

Marking Depth

75 Micron

Cooling Method

AC Cooled & Water Chiller

Marking Speed

0 ~ 8000 mm/s (Depend Om Material)

Marking Format

Graphic, Logo, Text, Barcode, QR Code,

TTF Font, Sequential and Batch

Numbering, Automatic Date & Time,

Variable Text, Real time Clock

Applicable Material

Box

Lather Product

Glass Product

Plastic Product

Label

Stone Product

Rubber Product

Fiber Board

Sticker

ABS & PP

Feature:

UV Laser Marking of quality | vision readable 2D Codes up to 5.0m/sec.

High Contrast mark on Suitable Packing.

Mostly Pharmaceutical | Medical | Cosmetics and food

Industries utilize UV laser marking





THERMAL
INKJET PRINTER



RE 10.1

THERMAL INKJET PRINTER

RE 10.1

Can Work with 12.7mm and 25.4mm ink Cartridge
Speed Up to 120m/min at 300*600dpi
Support variable code,data,GS1
Easy Use Our 21 Operating Language
Can Connect to Scanner, PLC, and other devices
Customize Colour, UI add Font Friendly

Printing Technology

Thermal inkjet technology 2.5

Display

10 inch capacitive touch screen

Ink Type

Water based, solvent based, UV ink

Ink Management

Automatically calculate the remaining ink, and estimated print

Cartridge Type

12.7mm, 25.4mm

Operation System

Customized Android & Linux

Storage

3G

Max Print Height

12.7 Or 25.4mm (1 Head), RE 10.1
25.4 Or 50.8mm (2 Head), RE 10.2
38.1 Or 76.2mm (3 Head), RE 10.3
50.8 Or 101.6mm (4 Head), RE 10.4

Language

English, Spanish, Portuguese, Turkish, Arabic,
Farsi, French, Germany, Thai Korean, Japanese,
Russian, Italian, etc. any language can be customized.

Print Content

Variable code, variable data, text, date, time, batch
number, symbol, QR code, bar code, counter, GS1, logo etc

Print Resolution

600 dpi, 300 dpi, 150dpi

Speed

Up to 120m/min at 300*600 dpi

Throw Distance

2-5mm recommended

Support Pens

1-4

Material

Aluminum

Electrical Requirement

100 - 230 ACV, 5A, 50/60Hz, 1PH

Adapter

AC input 100-240v, DC output 32V/5A

Interface

2USB2.0.2, USB3.0, RS232, Gigabit
Ethernet, Bluetooth 5.0, encoder,
photocell, alarm light

Working Environment

Temperature 0-45°C /Humidity
30-80%Rh

Font

Any fonts can be added by yourself

Image Format

jpg, png, bmp, css, web,etc

PC Software Format

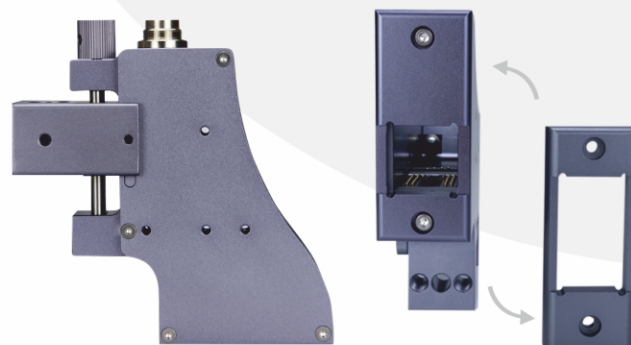
MS EXCEL,MS Access, SQL2000,
SQL2005, SQL2008

Variable Data Format

Csv,txt, xlsx, xls

Code

Codel1, Code16k, Code39, Code 49, Code93, Code128, EAN8,
EAN13, EAN14, UPCA, UPCE, INT25, ITF14, PDF417,
Micro QR Code, Grid Matrix, Data Matrix, GS1 DataBar-14,
GS1-EAN128, GS1-DM, GS1-QRcode, Others can be customized.



THERMAL INKJET PRINTER

RE Handy

Model Name

TP Handy

Type of Machine

Hand Held TIJ

Operating System

Linux

Dimension (H x W x D)

242 x 120 x 125 mm

Weight

0.95 kg

CPU

Quad 1.4 GHz

Interface

USB

Battery

2600 Mah, DC 16.8V

Adapter

AC Input 100V to 240V, DC
Output 16.8V/2A

Operating condition

Temperature 5 - 45°C,
Humidity 40% To 60 %

Ink Type

Solvent Base, Water Base

Ink Colour

Black, Red, Blue, Green, Yellow, White

Language

English, Arabic, Chinese, Turkish,

Print Content

Numbers, Symbols, QR Code,
Bar Code, Date, Time, Counter.

Print Distance

2 To 5 mm

Print Resolution

600 Dpi Maximum

Print Height

2mm to 12.5mm (RE Handy Half Inch)
2mm to 25.0mm (RE Handy One Inch)
2mm to 50.0mm (RE Handy Two Inch)



Print Sample





RADHE
ENTERPRISE

Plot No. 36, Sr.No. 277/1,
Opp. Kaneriya oil Mill,
Rani Ind. Area, Shapar (Veraval),
Dist. Rajkot, INDIA.

T. 02827 252232

M. +91 99099 81123, +91 99136 31412

E. info@rejettech.com

w. www.rejettech.com

Like us on :



Ahmedabad | Morbi | Gandhidham | Surat | Vapi
Rajasthan | Maharashtra | Madhya Pradesh | West Bengal
Karnataka | Andhra Pradesh | Panjab | Delhi | Uttar Pradesh